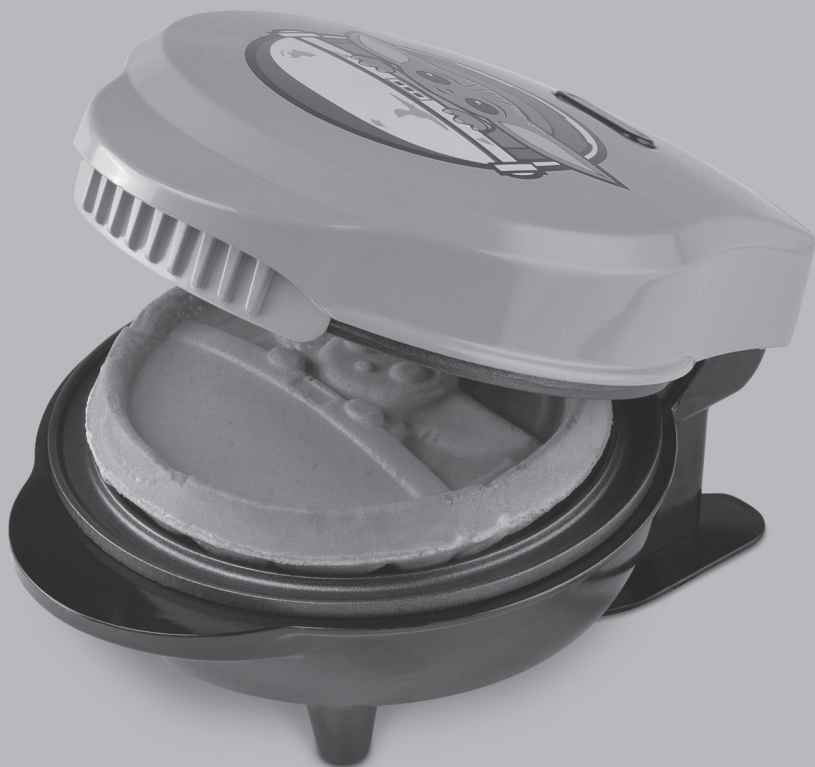


STAR WARS™

MINI WAFFLE MAKER



LSW-46C

DISTRIBUTED BY SELECT BRANDS, INC. LENEXA, KS 66219, USA

www.starwars.com

© & ™ Lucasfilm Ltd.

Disney

IMPORTANT SAFEGUARDS

When using electrical appliances especially when children are present, basic safety precautions should always be followed to reduce the risk of fire, electric shock, and/or injury to persons, including the following:

1. READ ALL INSTRUCTIONS.
2. Do not touch hot surfaces. Metal parts can become hot. Use any handles or knobs.
3. To protect against electrical shock, do not immerse cord, plug or appliance in water or other liquid.
4. Close supervision is necessary when any appliance is used by or near children.
5. To disconnect, unplug from wall outlet.
6. Unplug from outlet when not in use and before cleaning. Allow to cool before cleaning and putting on or removing parts.
7. Do not operate any electrical appliance with a damaged cord or plug or after appliance malfunctions or has been dropped or damaged in any manner. Return appliance to nearest authorized service facility for examination, repair or adjustment.
8. The use of accessory attachments not recommended by the appliance manufacturer may result in fire, electrical shock or injury.
9. Do not use outdoors.
10. Do not let cord hang over edge of table or counter, or touch hot surfaces.
11. Do not place appliance on or near a hot gas or electric burner, or in a heated oven or microwave.
12. Extreme caution must be used when moving an appliance containing hot oil, water or other hot liquids.
13. Do not use the appliance for other than its intended use.
14. Do not operate while unattended.

SAVE THESE INSTRUCTIONS

OPERATING INSTRUCTIONS

PRODUCT MAY VARY SLIGHTLY FROM ILLUSTRATIONS



This appliance is for HOUSEHOLD USE ONLY. It may be plugged into an AC electrical outlet (ordinary household current). Do not use any other electrical outlet.

CORD PLUG

This appliance has a polarized plug (one blade is wider than the other). To reduce the risk of electric shock, this plug is intended to fit into a polarized outlet only one way. If the plug does not fit into the outlet, reverse the plug and try again. If it still does not fit, contact a qualified electrician. Do not attempt to modify the plug in any way.

LINE CORD SAFETY TIPS

1. Never pull or yank on cord or the appliance.
2. To insert plug, grasp it firmly and guide it into outlet.
3. To disconnect appliance, grasp plug and remove it from outlet.
4. Before each use, inspect the line cord for cuts and/or abrasion marks. If any are found, this indicates that the appliance should be serviced and the line cord replaced.
5. Never wrap the cord tightly around the appliance, as this could place undue stress on the cord where it enters the appliance and cause it to fray and break.

A short power supply cord is provided to reduce the hazards resulting from entanglement or tripping over a longer cord. Extension cords are available and may be used if care is exercised in their use. If an extension cord is used:

1. **The marked electrical rating of the cord set or extension cord should be at least as great as the electrical rating of the appliance, and**
2. **The cord should be arranged so that it will not drape over the countertop or tabletop where it can be pulled on by children or tripped over unintentionally.**

DO NOT OPERATE APPLIANCE IF THE LINE CORD SHOWS ANY DAMAGE, OR IF APPLIANCE WORKS INTERMITTENTLY OR STOPS WORKING ENTIRELY.

IMPORTANT

During the first few minutes of initial use, you may notice smoke and/or a slight odor. This is normal and should quickly disappear. It will not recur after appliance has been used a few more times.

USING YOUR WAFFLE MAKER

Solid surface countertops can be easily scratched, cracked, scorched, or damaged, especially when exposed to heat. To prevent damage, the following precautions should be observed when using this product:

- Always use a trivet under heat generating sources such as Waffle Makers, etc.
- Do not place hot pans, pots, ceramic or stoneware inserts, etc. directly on the countertop surface.

Before first use, unpack the waffle maker, open the cover and wipe the top and bottom cooking plates with a damp cloth and then towel dry.

HOW TO USE THIS WAFFLE MAKER

For Customer Assistance, please contact Select Brands Customer Service at 1-913-663-4500.

1. Insert plug firmly into wall outlet. The POWER light will turn on.
2. Lightly glaze both cooking plates with a small amount of vegetable oil or a non-stick spray.
3. Close the top to allow the waffle maker to heat up. Preheat Waffle Maker for approximately 3-5 minutes.
4. Slowly pour waffle mix into the bottom cooking plate. DO NOT overfill with waffle mix or batter. CAUTION: Cooking surface is hot: handle with care.
5. Close lid. Normal cooking time will be 3-6 minutes. The POWER light will turn on and off as the thermostat keeps the waffle maker at the proper cooking temperature.
6. Remove the waffles from the cooking plates with a plastic (non-metallic) utensil. BE CAREFUL with the waffles; they are HOT. Allow to cool for a few minutes before enjoying.
7. Unplug the power supply cord after cooking and allow the waffle maker to cool before moving or storing.

USER MAINTENANCE INSTRUCTIONS

This appliance requires little maintenance. It contains no user serviceable parts. Do not try to repair it yourself. Refer it to qualified personnel if servicing is needed.

To Clean: Always unplug the appliance from the power source and wait until it cools down before cleaning. There is no need to take the appliance apart for cleaning. Dry with a paper towel to absorb excess oils. Brush crumbs from the grooves and wipe with a damp cloth and mild soap. Never immerse in water. Avoid using sharp utensils, as they will scratch the surfaces. Do not use cleansers or oven cleaners on the cooking plates. To clean the exterior, use a damp cloth with mild soap and towel dry.

To Store: Unplug the appliance and store in its box or in a clean, dry place. Store the cord loosely coiled. Never wrap the cord tightly around the cord wrap. Do not put stress on the cord where it enters the appliance, as it could cause the cord to fray and break.

ONE YEAR LIMITED WARRANTY

SELECT BRANDS, INC. warrants, subject to the conditions stated below, that from the date of purchase, this product will be free from mechanical defects for a period of one (1) year. SELECT BRANDS, INC., at its option, will repair or replace this product found to be defective during the warranty period. Should this product become defective by reason of improper workmanship or material defect during the specified warranty period, Select Brands, Inc. will repair or replace the same effecting all necessary parts replacements for a period of one year from the date of purchase.

Transportation charges on parts, or products in whole, submitted for repair or replacement, under this warranty, must be borne by the purchaser.

CONDITIONS: This warranty is valid for the original retail purchaser from the date of initial retail purchase and is not transferable. This warranty does not apply to product sold by third party resellers. Keep the original sales receipt. Proof of purchase is required to obtain warranty service or replacement. Dealers, service centers, or retail stores do not have the right to alter, modify or in any way, change the terms and conditions of this warranty.

Warranty registration is not necessary to obtain warranty on Select Brands, Inc. products. Save your proof of purchase receipt.

ABOUT YOUR PRODUCT WARRANTY: Most warranty repairs are handled routinely, but sometimes requests for warranty service may not be appropriate. For example, warranty service would NOT apply if the product damage occurred because of misuse, lack of routine maintenance, shipping, handling, warehousing or improper installation. Similarly, the warranty is void if the manufacturing date or the serial number on the product has been removed or the equipment has been altered or modified. During the warranty period, the authorized service dealer, at its option, will repair or replace any part that, upon examination, is found to be defective under normal use and service.

NORMAL WEAR: This warranty does not cover normal wear of parts or damage resulting from any of the following: Negligent use or misuse of the product; Improper voltage or current; Use contrary to the operation instructions; Deviation from instructions regarding storage and transportation; Repair or alteration by anyone other than SELECT BRANDS, INC. or an authorized service center. Further, the warranty does not cover Acts of God, such as fire, flood, hurricanes and tornadoes.

SELECT BRANDS, INC. shall not be liable for any incidental or consequential damages caused by the breach of any express or implied warranty. Except to the extent prohibited by applicable law, any implied warranty of merchantability or fitness for a particular purpose is limited in duration to the duration of the above warranty. Some states, provinces or jurisdictions do not allow the exclusion or limitation of incidental or consequential damages or limitations on how long an implied warranty lasts, so the above limitations or exclusion may not apply to you. This warranty gives you specific legal rights, and you may also have other rights that vary from state to state or province to province.

HOW TO OBTAIN WARRANTY SERVICE: You must contact SELECT BRANDS, INC. Customer Service at 1-913-663-4500. A Customer Service representative will attempt to resolve warranty issues over the phone. If telephone resolution is not possible, the Customer Service representative will require your assistance in performing routine diagnostic procedures. This warranty is effective for the time periods listed above and subject to the conditions provided for in this policy.

To register this product and view other fine products, visit us online at www.selectbrands.com

Made in China
060420

